

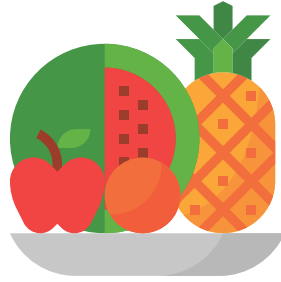
Community Health

Health status

74.6% reported their health as being **good, very good or excellent**
COMPARED TO 79.2% FOR VICTORIA

77.8% of women reported this
COMPARED TO 78.7% FOR VICTORIA

69.7% of men reported this
COMPARED TO 79.7% FOR VICTORIA



Body weight status

57% of adults are **overweight or obese**
COMPARED TO 50.8% FOR VICTORIA

47.9% of women
COMPARED TO 43.7% FOR VICTORIA

67.4% of men
COMPARED TO 58.2% FOR VICTORIA



Chronic conditions and diseases

7.1%
 report having **type 2 diabetes**
COMPARED TO 5.4% FOR VICTORIA

5.7% of women
COMPARED TO 4.6% FOR VICTORIA

8.9% of men
COMPARED TO 6.3% FOR VICTORIA



9%
 report having had **cancer**
COMPARED TO 8% FOR VICTORIA

10.3% of women
COMPARED TO 8.5% FOR VICTORIA

6.8% of men
COMPARED TO 7.6% FOR VICTORIA



22%
 report having **arthritis**
COMPARED TO 21% FOR VICTORIA

7%
 report having **heart disease**
COMPARED TO 6.7% FOR VICTORIA



22.7%
 report having **asthma**
COMPARED TO 20% FOR VICTORIA

28% report having **two or more chronic diseases**
COMPARED TO 25.5% FOR VICTORIA



The prevalence of some chronic conditions and diseases are improving:

Asthma ↓ **3.6%**
 Cancer ↓ **1.1%**
 Heart disease ↓ **0.6%**

The prevalence of other chronic conditions and diseases are getting worse:

Type 2 diabetes ↑ **2.1%**
 Arthritis ↑ **0.8%**

Health inequities

We know that there are differences in the overall health status between population groups that result from social, economic, cultural and geographic influences that are avoidable and unfair.

Population groups at risk of health inequities:



1% identify as **Aboriginal or Torres Strait Islander**
COMPARED TO 0.8% FOR VICTORIA



5.4% estimated **LGBTQI+ population**
COMPARED TO 5.7% FOR VICTORIA



5.4% require assistance due to a **disability**
COMPARED TO 4.7% FOR VICTORIA



25.3% of households are **people living alone**
COMPARED TO 23.3% FOR VICTORIA



11.3% speak a **language other than English at home**
COMPARED TO 25.9% FOR VICTORIA

51.2% are **women**
COMPARED TO 50.9% FOR VICTORIA

15.3% are aged **65 years plus**
COMPARED TO 15.6% FOR VICTORIA

18.8% are **low income households**
COMPARED TO 18.3% FOR VICTORIA



Frankston City Health and Wellbeing Community Profile

These statistics have been sourced from a number of datasets, and comprise the most currently available data at the time of printing. To view the full Frankston City Health and Wellbeing Community Profile 2021, please visit our website.

1300 322 322 www.frankston.vic.gov.au/healthandwellbeing