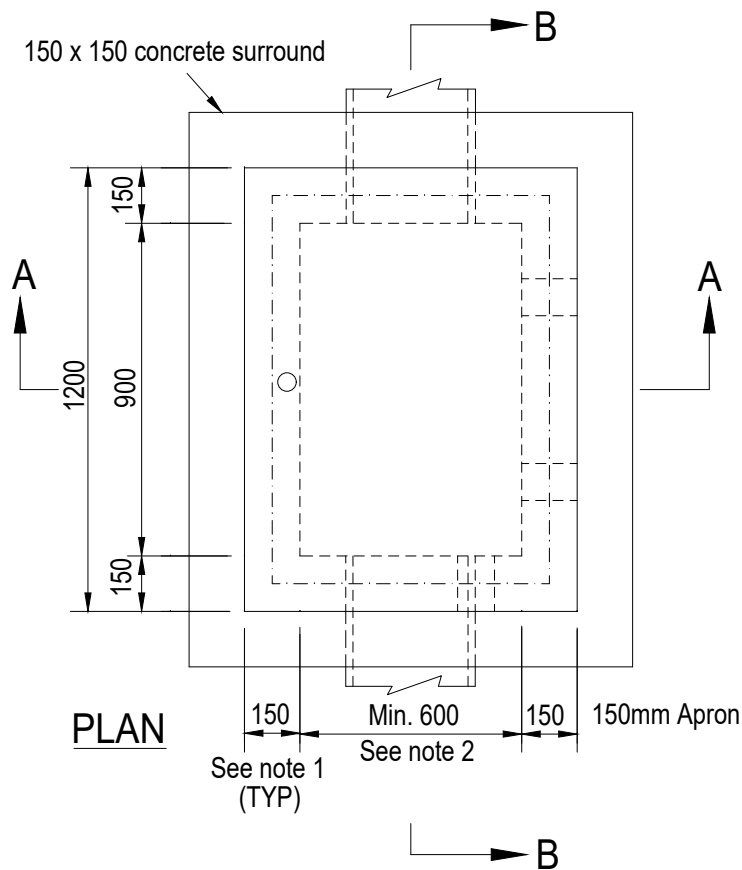


SECTION A-A



SECTION B-B



PLAN

NOTES

1. For depth of invert greater than 1.5m, min. wall & base thickness to be 200mm, and base to be corbelled out to 900 x 900mm.
2. Min. internal pit dimension = external pipe dia. + 150mm. For pipe dia. greater than 450mm corbel pit top to a min. of 600mm.
3. SL82 reinforcing is required for pits greater than 1200 depth.
4. Class 'B' 900 x 600 Clear Opening Composite Lid as per AS3996:2019 Junction GREEN - with embossed Frankston Logo Refer SD 207 for details.
5. Concrete strength shall be 25MPa at 28 days.
6. Where no AG pipes exist, seal stubs with Geofabric.
7. Lock to suit AS3996:2019 key
8. Max insert weight of 26kg
9. "Do Not Cover" to be embossed / rebated into lid

	SCALE: 1 : 20	DATE: Dec 2012	APPROVED:
	DRAWN: H.D./P.J.D.	CHECKED:	 MANAGER ENGINEERING SERVICES
	<h1>JUNCTION PIT</h1>		LAST AMENDED:
			May 2022 <h2>SD 215</h2> PAGE 1 OF 1