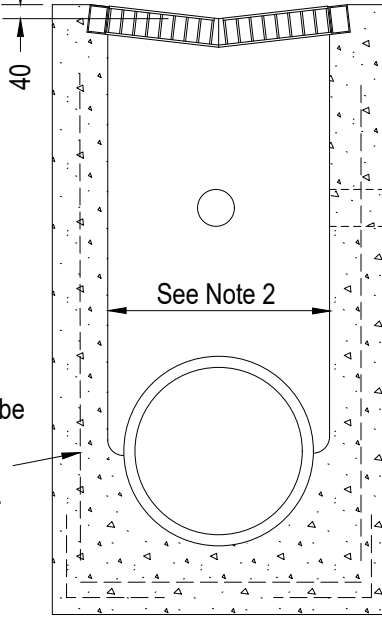
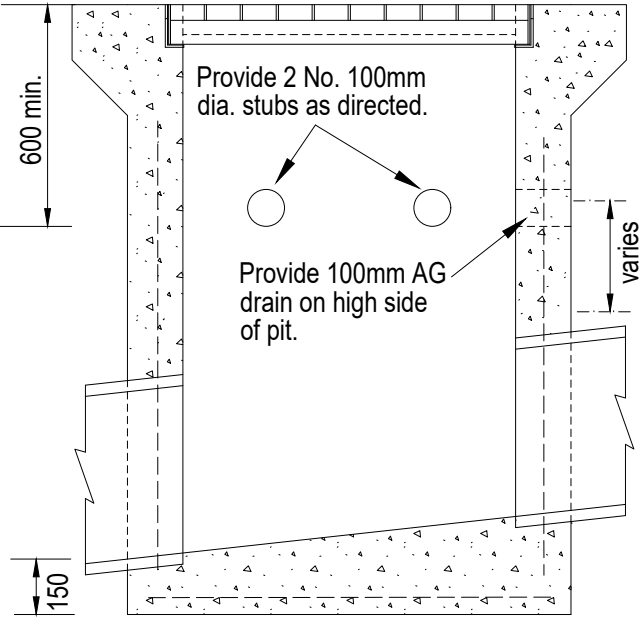


Typical 40mm or to match kerb profile

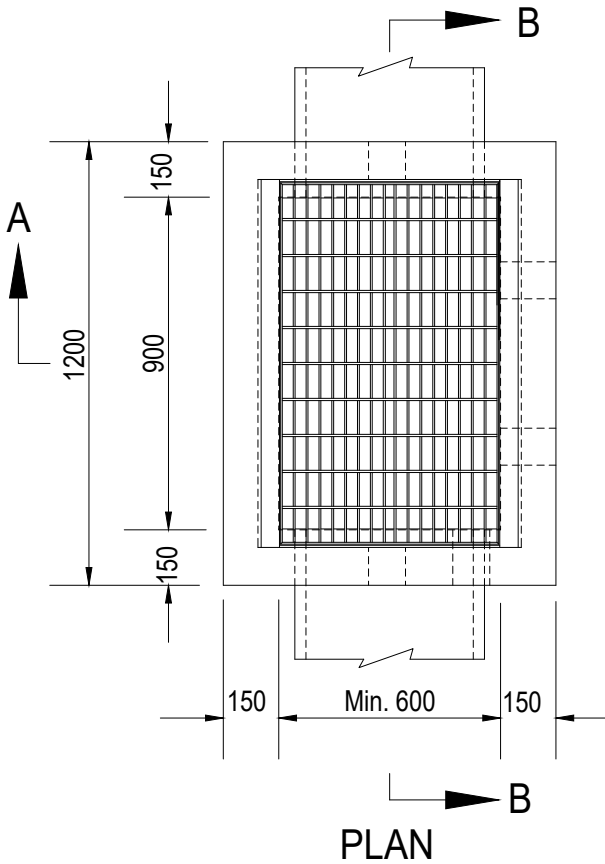


Reinforcement to be centrally located within wall. Laps to be 300mm min. See Note 3.



SECTION A-A

SECTION B-B



NOTES

1. For depth of invert greater than 1.5m, min. wall & base thickness to be 200mm, and base to be corbelled out to 900 x 900mm.
2. Min. internal pit dimension = external pipe dia. + 150mm. For pipe dia. greater than 450mm corbel pit top to a min. of 600mm.
3. SL82 reinforcing is required for pits greater than 1200 depth.
4. Class 'D' 900 x 600 Clear Opening 'V' Grate & Frame with approx. 40mm invert - Bikesafe, Galvanised and bolt down as per AS3996:2019
5. Concrete strength shall be 25MPa at 28 days.
6. Where no AG pipes exist, seal stubs with Geofabric.



SCALE: 1 : 20

DATE: Dec 2012

APPROVED:

Addy

DRAWN: S.R./P.J.D.

CHECKED:

MANAGER ENGINEERING SERVICES

LAST AMENDED:

May 2022

GRATED JUNCTION PIT
(Paved areas)

SD 230

PAGE 1 OF 1