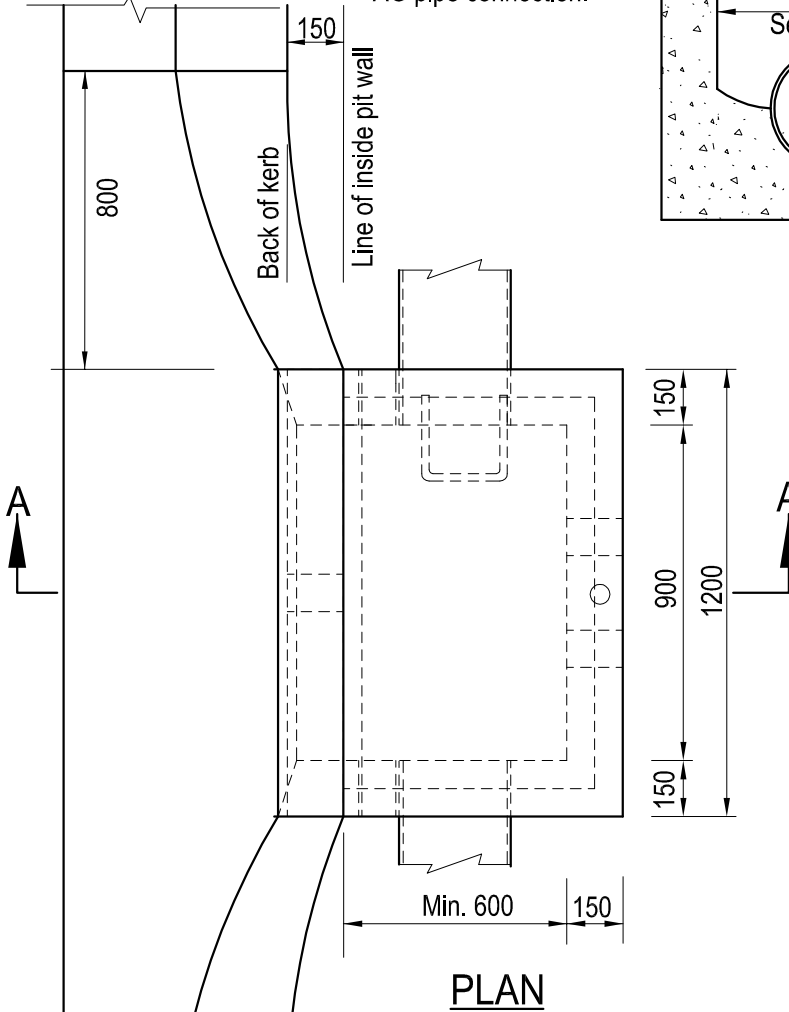
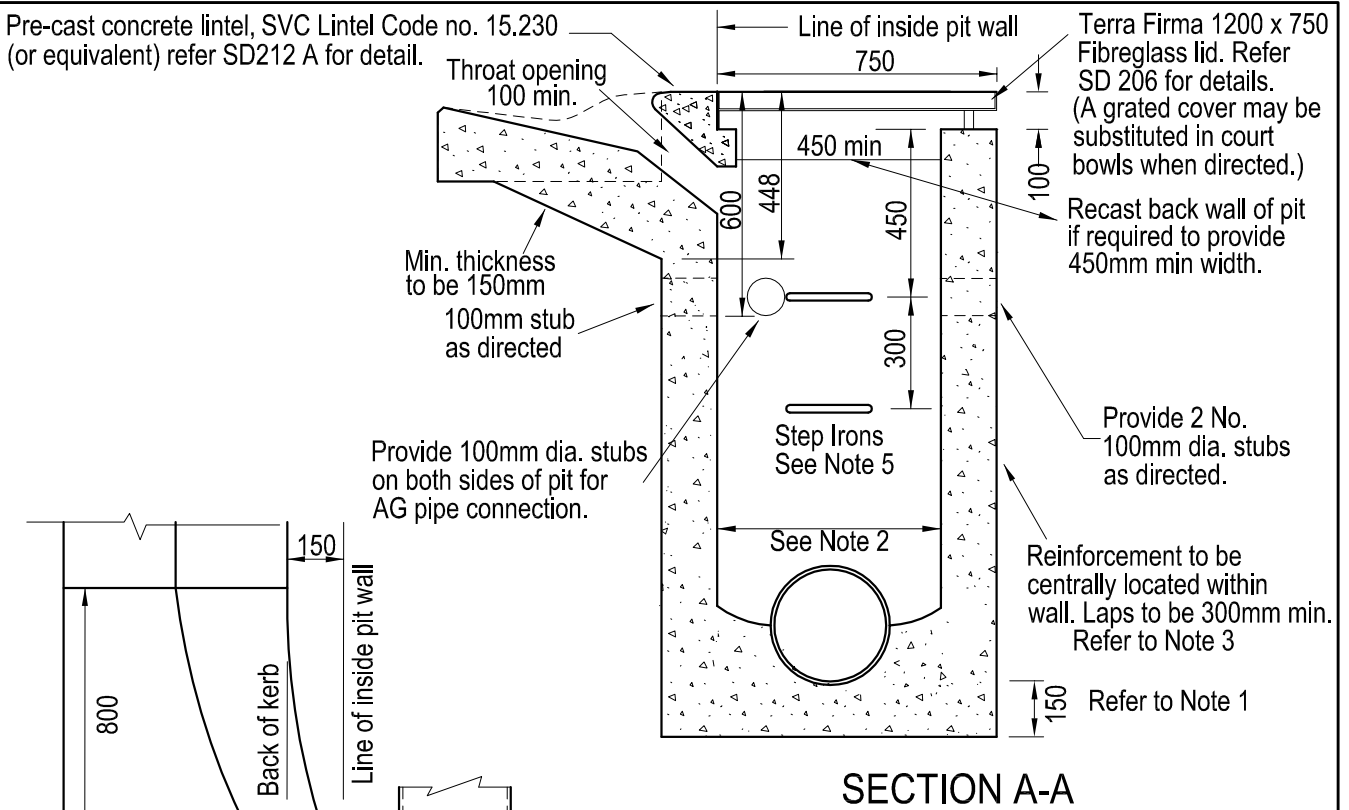




Pre-cast concrete lintel, SVC Lintel Code no. 15.230 (or equivalent) refer SD212 A for detail.



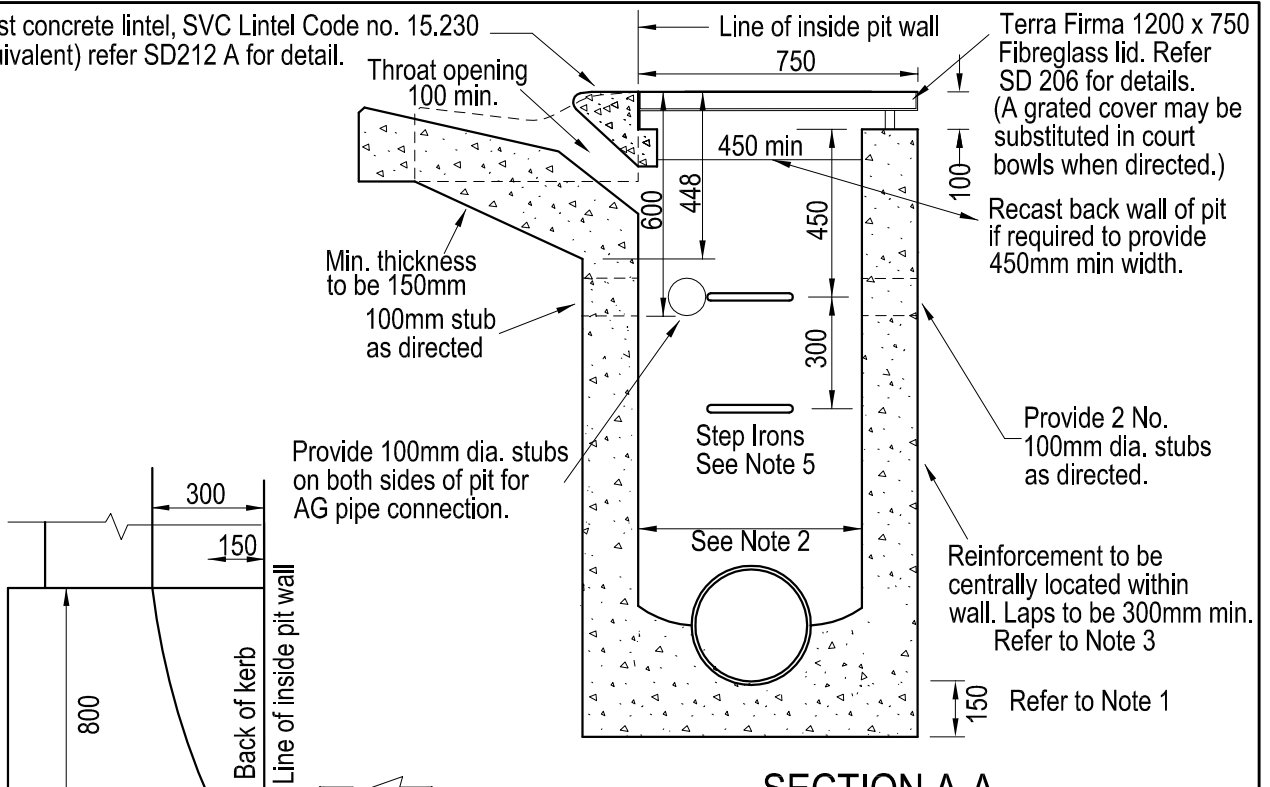
SECTION A-A

NOTES

1. For depth of invert greater than 1.5m, min. wall & base thickness to be 200mm, and base to be corbelled out to 900 x 900mm.
2. Min. internal pit dimension = external pipe dia. + 150mm. For pipe dia. greater than 450mm corbel pit top to a min. of 600mm.
3. SL82 reinforcing is required for pits greater than 1200 depth.
4. Pit lid to be Terra Firma fibreglass type, or approved equivalent. Refer SD 206 (In Court bowls an approved galvanised grate may be substituted.)
5. Step Irons, 230 x 230 x 20mm dia plastic coated, to be provided in pits over 900mm deep. Step Irons to be installed on INLET wall only.
6. Concrete strength shall be 25MPa at 28 days.
7. Where no AG pipes exist, seal stubs with Geofabric.

	SCALE: 1 : 20	DATE: Dec 2012	APPROVED:
	DRAWN: S.R./P.J.D.	CHECKED: DS	 INFRASTRUCTURE MANAGER
	SIDE ENTRY PIT TYPE 3 - LOCAL ROAD SEMI-MOUNTABLE KERB SD408 (80mm top of kerb to invert)		LAST AMENDED: June 2013
			SD 211 PAGE 1 OF 2

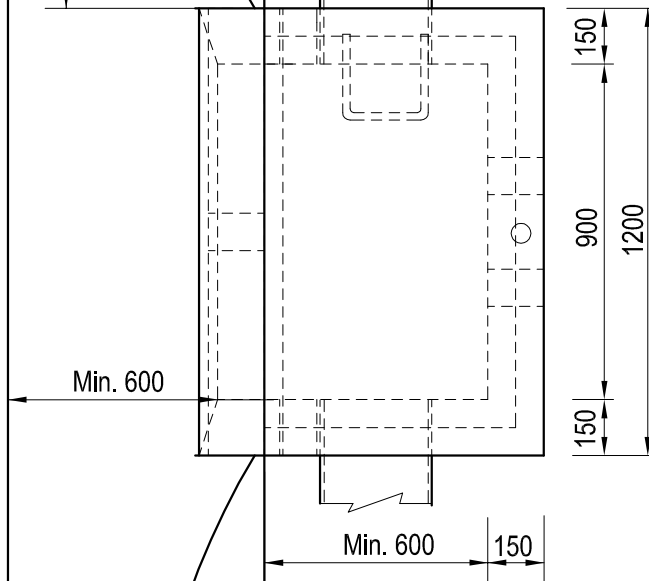
Pre-cast concrete lintel, SVC Lintel Code no. 15.230 (or equivalent) refer SD212 A for detail.



SECTION A-A

NOTES

1. For depth of invert greater than 1.5m, min. wall & base thickness to be 200mm, and base to be corbelled out to 900 x 900mm.
2. Min. internal pit dimension = external pipe dia. + 150mm. For pipe dia. greater than 450mm corbel pit top to a min. of 600mm.
3. SL82 reinforcing is required for pits greater than 1200 depth.
4. Pit lid to be Terra Firma fibreglass type, or approved equivalent. Refer SD 206 (In Court bowls an approved galvanised grate may be substituted.)
5. Step Irons, 230 x 230 x 20mm dia plastic coated, to be provided in pits over 900mm deep. Step Irons to be installed on INLET wall only.
6. Concrete strength shall be 25MPa at 28 days.
7. Where no AG pipes exist, seal stubs with Geofabric.



PLAN



SCALE: 1 : 20

DATE: Dec 2012

APPROVED:

DRAWN: S.R./P.J.D.

CHECKED: DS

INFRASTRUCTURE MANAGER

SIDE ENTRY PIT TYPE 3
 - LOCAL ROAD
 SEMI-MOUNTABLE KERB SD408
 (80mm top of kerb to invert)

LAST AMENDED:

June 2013

SD 211
 PAGE 2 OF 2