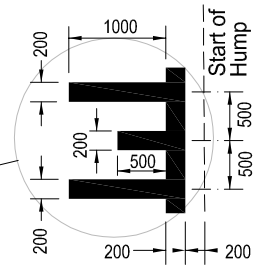
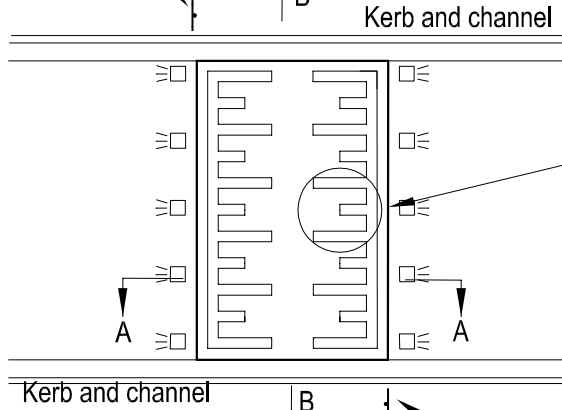


Align sign with leading edge of installation



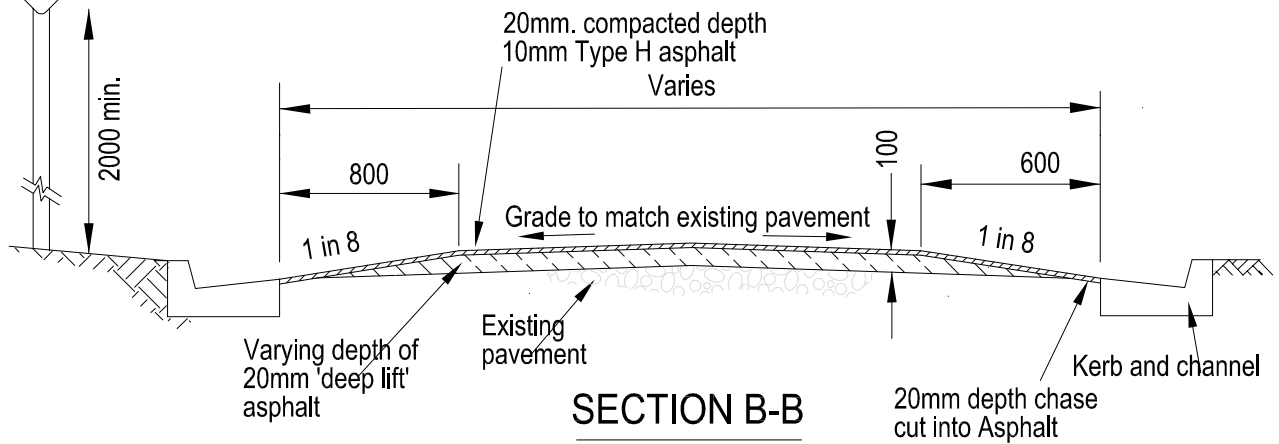
LINE MARKING DETAIL
Line-marking approved Thermoplastic

Install signs

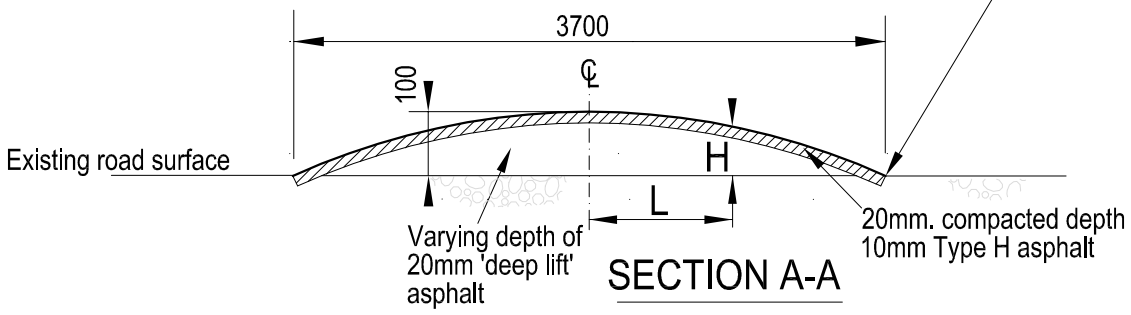


Refer traffic Engineering Manual Vol 1. Chapter 8 for singage requirements.
W5-10A

PLAN



SECTION B-B



SECTION A-A

L:	0	0.1	0.2	0.3	0.4	0.5	0.6	0.7	0.8	0.9	1.0	1.2	1.3	1.4	1.5	1.6	1.7	1.8	1.85
H:	100	100	99	97	95	93	90	86	81	75	71	65	58	51	43	25	16	5	0

Note : Road humps are to be located within 5m of an existing street light or a new street light must be installed within 5m of a road hump.
Sign must be installed to SD611 - Sign Installation Guidelines



NOT TO SCALE

DATE: Nov 2010

APPROVED:

DRAWN: H.D./P.J.D.

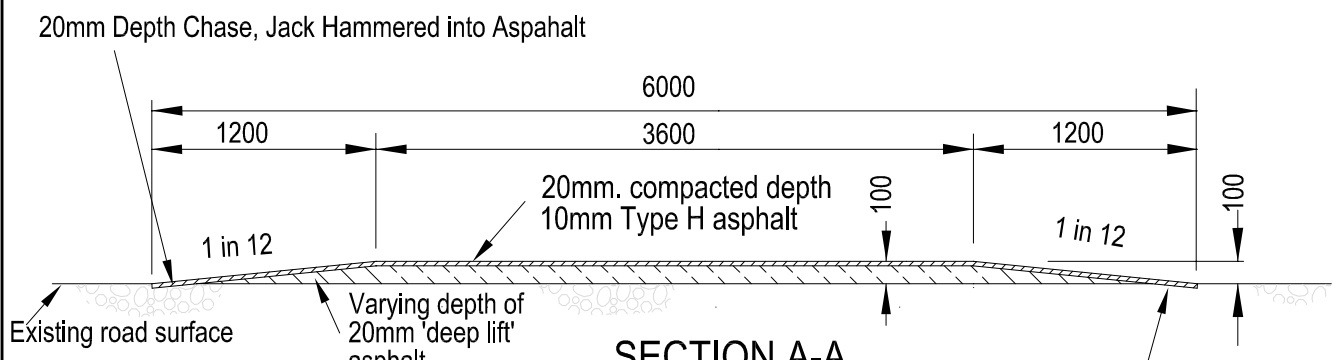
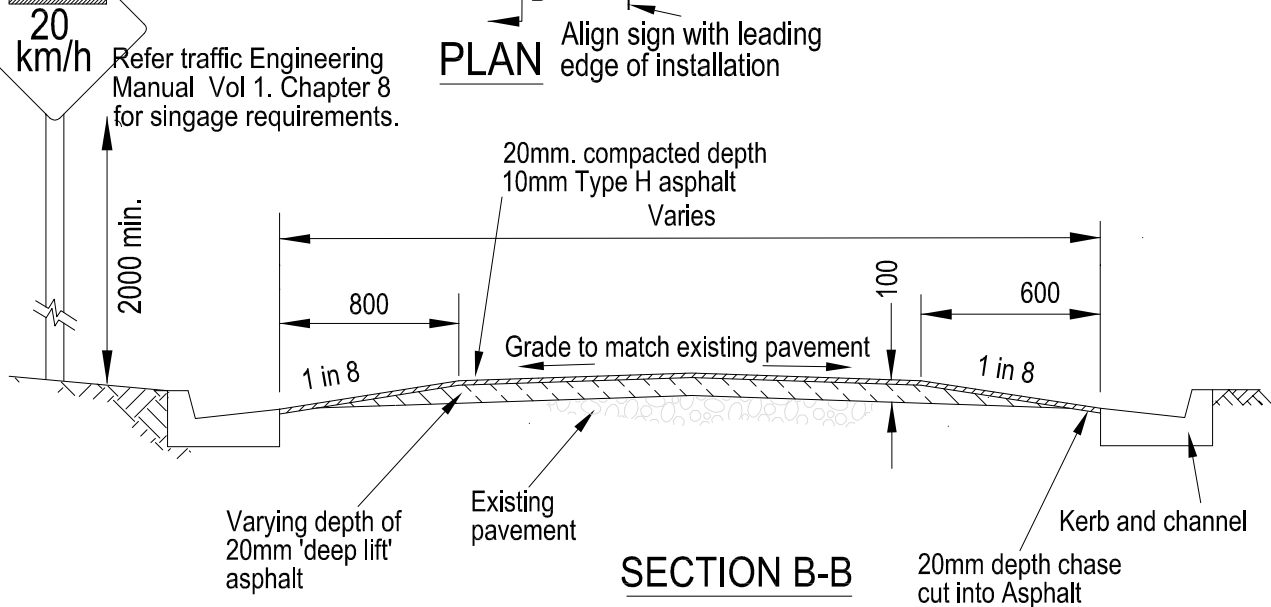
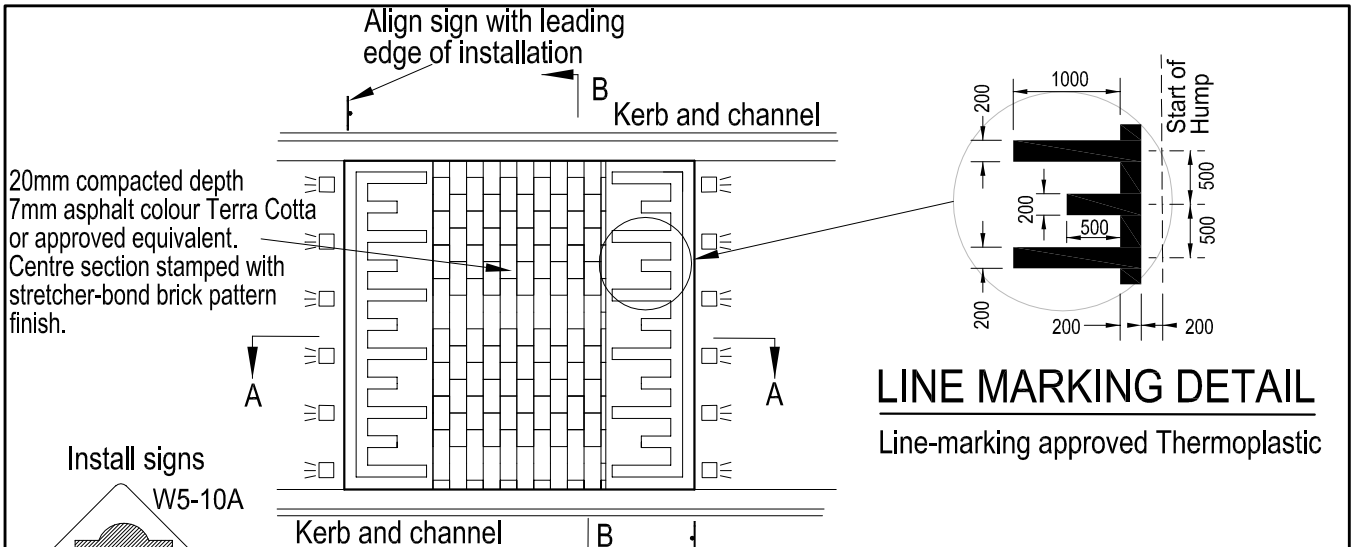
CHECKED: DS

INFRASTRUCTURE MANAGER

ROAD HUMPS (Not C.A.D.)
CONSTRUCTION DETAILS
WATTS PROFILE

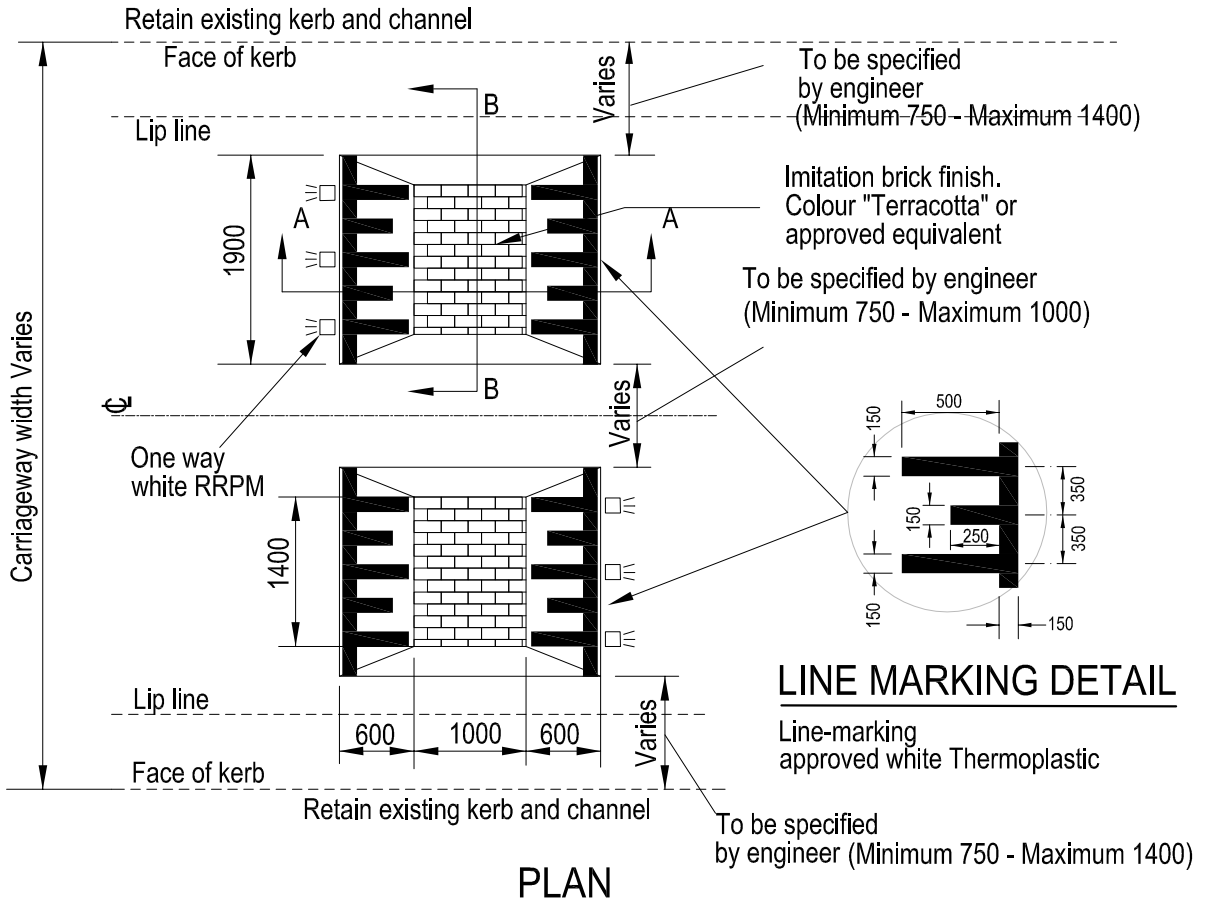
LAST AMENDED: June 2013

SD 350
PAGE 1 OF 3

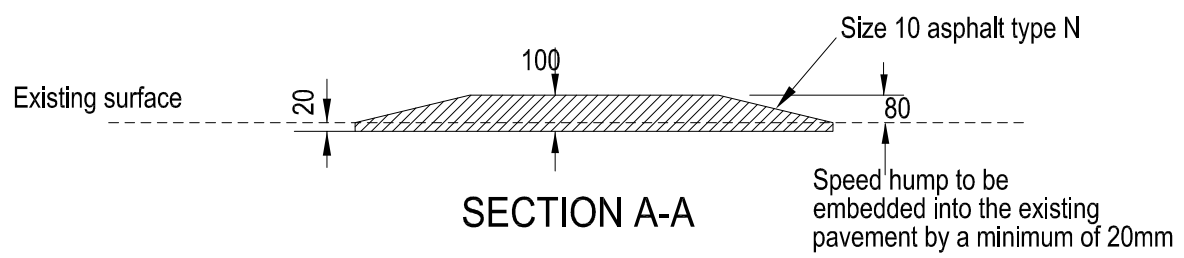


Note :
Road humps are to be located within 5m of an existing street light or a new street light
must be installed within 5m of a road hump.
Sign must be installed to SD611 - Sign Installation Guidelines
Road hump thickness is 75mm only applied to Bus Route

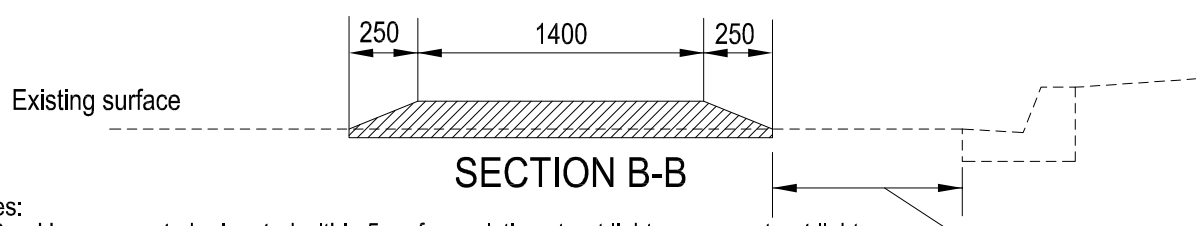
	NOT TO SCALE	DATE: Nov 2010	APPROVED:
	DRAWN: H.D./P.J.D.	CHECKED: DS	INFRASTRUCTURE MANAGER
	ROAD HUMPS (Not C.A.D.) CONSTRUCTION DETAILS FLAT TOP		LAST AMENDED: June 2013
SD 350 PAGE 2 OF 3			



PLAN



SECTION A-A



SECTION B-B

Notes:

1. Road humps are to be located within 5m of an existing street light or a new street light must be installed within 5m of a road hump.
2. Refer traffic Engineering Manual Vol 1. Chapter 8 for singage requirements.
3. Width of road pavement (face of kerb to face of kerb) determines number of cushions required. <7.6m - 2, 7.6m to 10.6m - 3, >10.6m - 2 with median to relevant design standards.
4. Sign must be installed to SD611 - Sign Installation Guidelines

	NOT TO SCALE	DATE: Nov 2010	APPROVED:
	DRAWN: T.T./P.J.D.	CHECKED: DS	 INFRASTRUCTURE MANAGER
	ROAD HUMPS CONSTRUCTION DETAILS SPEED CUSHION		LAST AMENDED: June 2013 SD 350 PAGE 3 OF 3