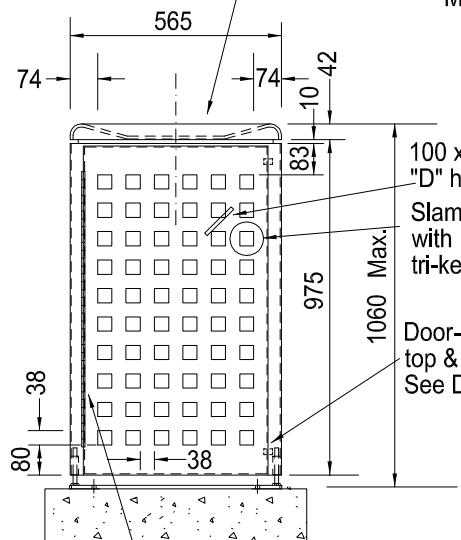


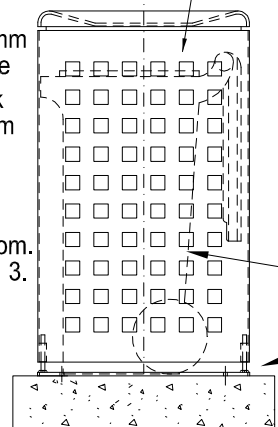
1.6mm thick pressed 316 stainless steel lid with 260 x 260mm opening. See Detail 2 for connection details.

3mm thick galvanised steel bin surround with 38 x 38mm perforations and painted in Dulux 'Luxathane' finish 'Mary Janes' 30BB 07/041.



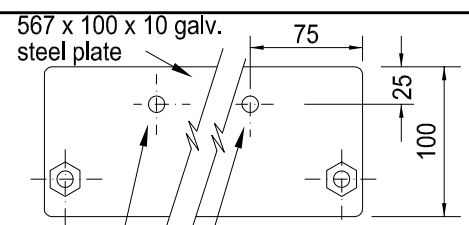
"Lane" stainless steel butt hinge with fixed pin, 735 long x 75 wide, to be welded to door and screwed to body. See Detail 3.

FRONT ELEVATION
1:20



700 x 700 x 150 DEEP
25MPa CONC. FOOTING

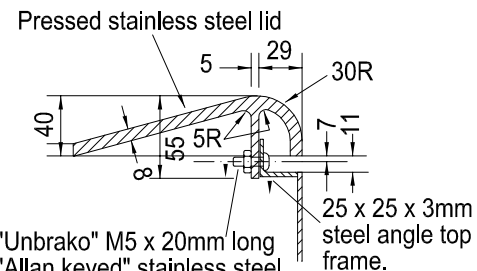
SIDE ELEVATION
1:20



Drill 11mm dia. hole for Dynabolting to conc. base.
10 dia threaded bolt
20 dia. sleeve

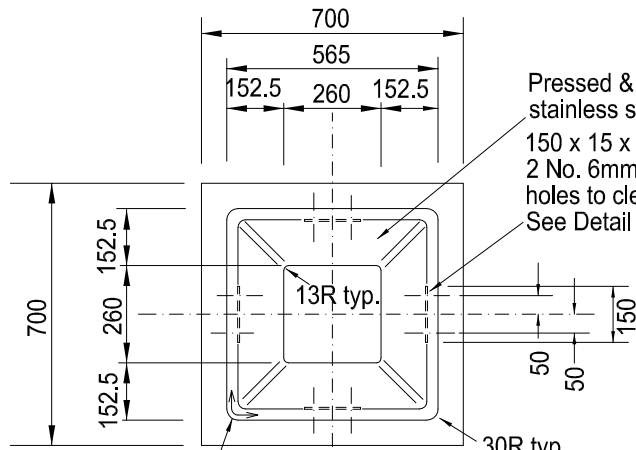
DETAIL 1
1:5

Holds one 120 litre plastic wheelie bin.
Bin surround to be set vertically using 4 No. M10 bolts, welded to base plates and bolted via 20mm dia. sleeves welded to surround. See Detail 1.



"Unbrako" M5 x 20mm long "Allan keyed" stainless steel dome head bolt & nut. 8No. required per lid.

DETAIL 2
1:5



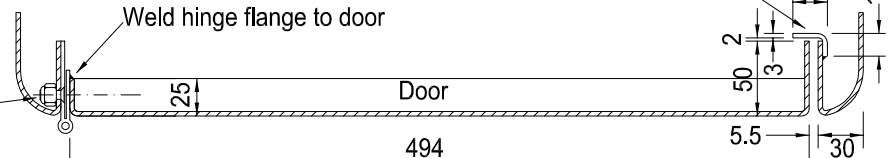
30mm continuous R to top.

LID PLAN
1:20

Pressed & polished stainless steel lid.
150 x 15 x 5 plate with 2 No. 6mm dia. drilled holes to clear M5 bolt. See Detail 2.

2 No. 15 x 3 steel flat door stops folded to profile shown & welded to body at top and bottom.

Fix hinge to body with M6 x 16mm long countersunk stainless steel screws and nylon locknut



DETAIL 3
1:5

Note:
Contractor to supply Nylex or similar approved 120 litre mobile garbage bin for installation with each bin surround.



SCALE: AS SHOWN

DATE: Dec 2012

APPROVED:

DRAWN: S.R./P.J.D.

CHECKED: DS

[Signature]
INFRASTRUCTURE MANAGER

LITTER BIN ENCLOSURE
(NOT FOR NEW PROJECTS)

LAST AMENDED: June 2013

SD 510
PAGE 1 OF 1