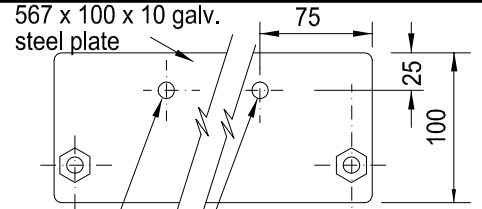


1.6mm thick pressed 316 stainless steel lid with 2x 160mm dia. openings. See Detail 3 for connection details.

3mm thick galvanised steel surround with 38 x 38mm perforations, finished with metal primer and 2 coats of exterior grade polyurethane paint Dulux "Blaze" blue No. 19941 or approved equivalent.



Drill 11mm dia. hole for Dynabolting to conc. base.

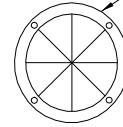
10 dia. threaded bolt  
20 dia. sleeve

Holds one 120 litre plastic wheelie bin.

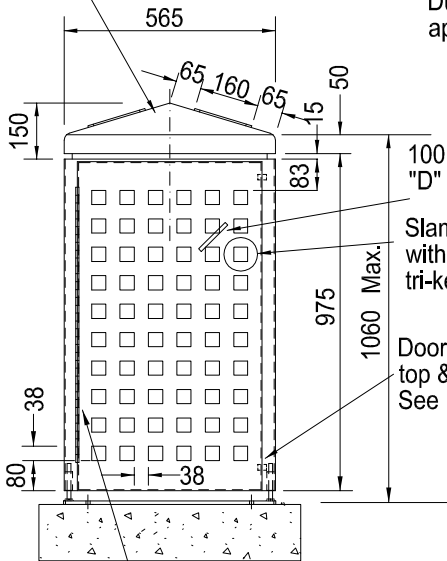
**DETAIL 1**  
1:5

Bin surround to be set vertically using 4 No. M10 bolts, welded to base plates and bolted via 20mm dia. sleeves welded to surround. See Detail 1.

Polished stainless steel band with black rubber insert screwed to lid using 4 No stainless steel screws. Cut rubber to form opening.

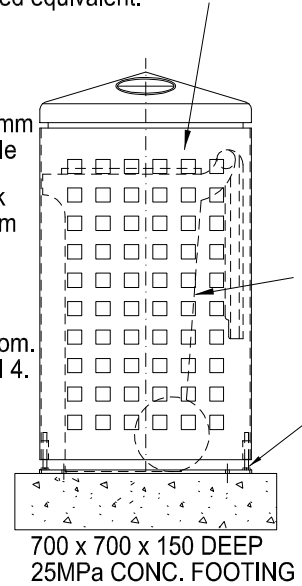


**DETAIL 2**  
1:10

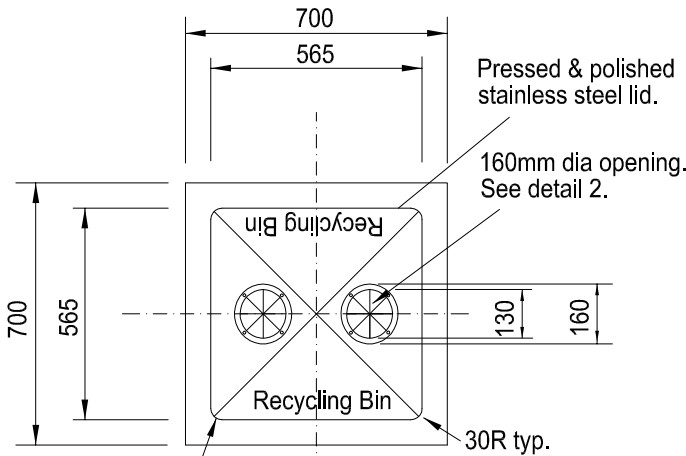


"Lane" stainless steel butt hinge with fixed pin, 735 long x 75 wide, to be welded to door and screwed to body. See Detail 4.

**FRONT ELEVATION**  
1:20



**SIDE ELEVATION**  
1:20

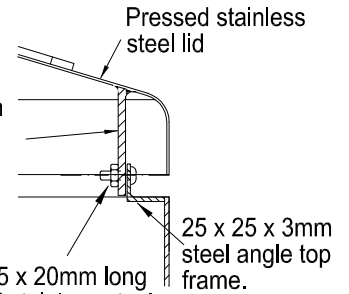


Pressed & polished stainless steel lid.

160mm dia opening. See detail 2.

**LID PLAN**  
1:20

150 x 75 x 5 plate with 2 No. 6mm dia. drilled holes to clear M5 bolt. 4No. required, welded to lid.



"Unbrako" M5 x 20mm long "Allan keyed" stainless steel dome head bolt & nut. 8No. required per lid.

**DETAIL 3**  
1:5

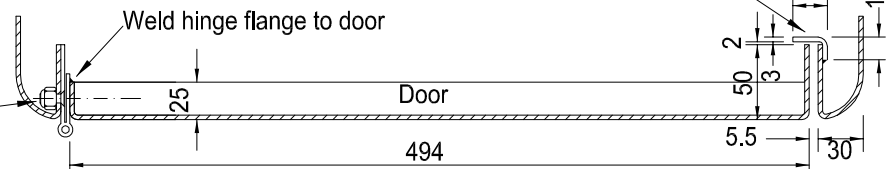
30mm continuous rad. to top.

Fix hinge to body with M6 x 16mm long countersunk stainless steel screws and nylon locknut

Note :

Contractor to supply Nylex or similar approved 120 litre mobile garbage bin for installation with each bin surround.

2 No. 15 x 3 steel flat door stops folded to profile shown & welded to body at top and bottom.



**DETAIL 4**  
1:5



SCALE: AS SHOWN

DATE: Dec 2012

APPROVED:

DRAWN: S.R./P.J.D.

CHECKED: DS

INFRASTRUCTURE MANAGER

**RECYCLING BIN ENCLOSURE**  
(NOT FOR NEW PROJECTS)

LAST AMENDED:

June 2013

**SD 511**

PAGE 1 OF 1