



HANGOUT ACCESS KEY

A GUIDE TO
VISITING YOUR
LOCAL
HANGOUT



Acknowledgement of Country

Frankston Youth Service acknowledges and pays respect to the Bunurong People, the Traditional Custodians of the lands and waters on which we gather.



CONTENTS AND GLOSSARY

- 5** About Us
- 6** Frankston Youth Central
- 10** Frankston South Hangout
- 14** Frankston North Hangout
- 18** Seaford Hangout
- 22** Karingal Hangout
- 26** Carrum Downs Hangout
- 30** Langwarrin Hangout



Wheelchair Accessible



Accessible Parking



Accessible Toilet



Bus Accessible



Train Accessible



Loud space - Sensory

ABOUT US

We are Frankston Youth Service! We work with young people aged 12 to 24 years old who work, live or go to school in the Frankston municipality. We run programs within local schools and our Hangouts during the school term, and have fun with holiday programs during the school term breaks.

At our service you can chat with a Youth Worker, connect to local programs and services, meet with friends and make new ones, get support in job searching, have something to eat and drink and find the support you need.



Shay



Youth Worker
0459 912 400

**FRANKSTON
CENTRAL
HANGOUT**

PROJECT Y
OUTREACH



Tilly



Youth Worker
0488 591 855

**FRANKSTON
SOUTH
HANGOUT**

YOUTH
COUNCIL



Wendy



Youth Worker
0400 838 123

**FRANKSTON
NORTH
HANGOUT**

YOUTH
NETWORK



Kellie



Youth Worker
0488 591 421

**SEAFORD
HANGOUT**
YOUTH EVENTS



Jane



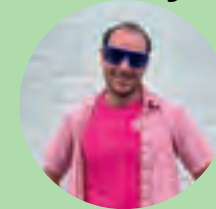
Youth Worker
0488 590 448

**KARINGAL
HANGOUT**

YOUTH
COUNCIL



Scotty



Youth Worker
0488 590 917

**LANGWARRIN
HANGOUT**

RESPECTFUL
RELATIONSHIPS



Cal



Youth Worker
0488 599 249

**CARRUM
DOWNS
HANGOUT**

PENINSULA
PRIDE



Immy



Youth Worker
0439 351 433

**FReeZA
FRESH
ENTERTAINMENT**



Cal J

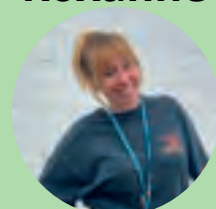


Youth Worker
0400 499 683

**FRESH
ENTERTAINMENT
RECORDING
STUDIO**



Roxanne



Practice Leader
0459 924 802

**FRANKSTON
YOUTH SERVICE**



Ilya



Coordinator
0428 432 389

**FRANKSTON
YOUTH SERVICE**



FOR MORE
INFORMATION
ABOUT OUR
PROGRAMS,
YOU CAN
CONTACT
THESE
WORKERS
DIRECTLY!

FRANKSTON YOUTH CENTRAL

61A PLAYNE STREET, FRANKSTON, 3199



CONTACT DETAILS

Youth Central Office: 03 9768 1366

Shay: 0459 912 400

Email: Shayan.Mahboobi@frankston.vic.gov.au

YOUTH CENTRAL OPENING HOURS:

Monday - Friday

10am - 5pm



**SCAN
ME** 

TO SEE OUR SOCIAL STORY

GETTING HERE



PARKING

Two standard car spaces and two designated accessible spaces are available outside of Youth Central. This parking has a 15-minute limit.

Public parking spaces are available along Payne Street with a two-hour parking limit.

Paid parking is available within the Frankston Arts Centre starting from \$2 for zero - two hours. There are two accessible spaces available on levels one and two, and three spaces available on level three. To access the Hangout, exit on level two via a lift or exit door.



PUBLIC TRANSPORT

Train - Youth Central is located 450m (6 min walk) away from Frankston Train Station.

Bus - Most bus stops are located within proximity of the Train Station.

These bus routes arrive and depart from Frankston:

- Bus route 772 runs from Frankston to Eliza Heights.
- Bus route 773 runs from Frankston to Frankston South via Kars Avenue.
- Bus route 775 runs from Frankston to Lakewood via Heatherhill Road.
- Bus route 776 runs from Frankston to Baxter via Pearcedale.
- Bus route 779 runs from Frankston to Belvedere via Kananook.
- Bus route 780 runs from Frankston to Carrum Station via Seaford Station.
- Bus route 785 runs from Frankston to Mornington East via Mt Eliza and Mornington.



Bike/Scooter - Bike racks are available outside Youth Central and the Frankston Library to securely lock up bikes and scooters.

SPACE ACCESSIBILITY

- Youth Central has no steps or ramps.
- Doors to enter are automatic sliding doors, with a push button to exit.
- Tactile guiding is used at zebra crossings on surrounding streets.
- The space has plenty of room for mobility aids such as wheelchairs, crutches, and canes.
- Registered service animals are welcome into the space.



SENSORY INFORMATION

- Youth Central has white lighting and natural lighting.
- Young people can wear headphones or sit outside to seek a quieter space if needed.
- Fidget toys are available for young people to utilise.
- Youth Central is busiest during hangout on Monday and Thursday from 3:00 pm – 4:45 pm.



Youth Central may be loud or quiet depending on the time of your visit.

BATHROOM ACCESSIBILITY

- The gender-neutral bathroom within Youth Central is not wheelchair accessible and is only available upon request. There is not enough room to turn a wheelchair around, but there are handrails for assistance.
- Public toilets are available in the Arts Centre and Frankston Library next door. This includes designated Male, Female and Accessible (disability) toilets.
- Designated baby change facilities are also available.



FRANKSTON SOUTH HANGOUT

**55 TOWERHILL ROAD,
FRANKSTON SOUTH, 3199**



CONTACT DETAILS

Tilly: 0488 591 855

Email: teneille.king@frankston.vic.gov.au

FRANKSTON SOUTH HANGOUT OPENING HOURS:

Monday 3pm - 5pm



GETTING HERE



PARKING

Frankston South Community and Recreation Centre has a designated car park with 25+ car spaces and 2 designated accessible spaces with a ramp. Parking is free and has a 3-hour limit.



PUBLIC TRANSPORT

Bus - These bus routes arrive and depart from the bus stop on Foot Street outside Frankston High School Senior Campus:

- Bus route 772 runs from Frankston to Eliza Heights.
- Bus route 774 runs from Frankston to Delacombe Park.
- Bus route 775 runs from Frankston to Lakewood via Heatherhill Road.
- Bus route 776 runs from Frankston to Baxter via Pearcedale.

Disembark at Frankston High school and walk 30m toward the Foot Street Roundabout. Cross the road, turn right and walk 140m to the Community Centre. (3 min approx.)



Bike/Scooter - Bike racks are available outside the Community Centre to securely lock up bikes and scooters.

SPACE ACCESSIBILITY

- Frankston South Hangout has stairs or a ramp to enter the Community Centre.
- The doors to enter are automatic sliding doors with a push button to exit. Doors within the centre are push/pull doors.
- Tactile guiding is used to mark stairs and ramps around the centre.
- The space has plenty of room for mobility aids, such as wheelchairs, crutches, and canes, to be moved and turned around.
- Registered service animals are welcome into the space.



SENSORY INFORMATION

- South Hangout has white lighting and natural lighting.
- Young people can wear headphones or sit outside to seek a quieter space if needed.
- Frankston South Hangout is only open on Monday between 3 pm and 5 pm during the school term.



Frankston South Hangout may be loud due to the adjacent basketball court.

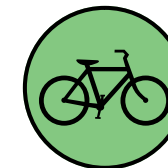
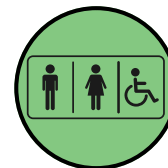
BATHROOM ACCESSIBILITY

- A gender-neutral accessible (disabled) bathroom is available for use within the hangout.
- The centre also has designated Male, Female, and accessible (disability) bathrooms.
- Designated baby change facilities are also available.



FRANKSTON NORTH HANGOUT

**26 MAHOGANY AVENUE,
FRANKSTON NORTH 3200**



CONTACT DETAILS

Wendy: 0400 838 123

Email: wendy.champion@frankston.vic.gov.au

FRANKSTON NORTH HANGOUT OPENING HOURS:

Tuesday 3pm - 5pm



**SCAN
ME** 

TO SEE OUR SOCIAL STORY

GETTING HERE



PARKING

Frankston North Community Centre has a car parks with 20 spaces available, and 2 designated accessible spaces with a ramp.



PUBLIC TRANSPORT

Bus - Bus route 833 from Frankston Station to Carrum Station via Carrum Downs. Disembark at Eric Bell Reserve/Forest Dr and walk up Mahogany Avenue for 150m (approx. 2 minutes).



Bike/Scooter - Bike racks are available outside the Community Centre to securely lock up bikes and scooters.

SPACE ACCESSIBILITY

- Frankston North has steps or a ramp to enter.
- Doors to enter are push/pull doors.
- Tactile guiding is used to mark ramps and access points to disabled parking spaces.
- The space has plenty of room for mobility aids, such as wheelchairs, crutches, and canes, to be moved and turned around.
- Registered service animals are welcome into the space.



SENSORY INFORMATION

- Young people can wear headphones or sit outside to seek a quieter space if needed.
- The space may be loud or quiet depending on how many people are in the space.
- Frankston North Hangout is only open on Tuesday between 3 pm and 5 pm during the school term.

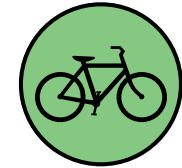
BATHROOM ACCESSIBILITY

- A gender-neutral accessible (disabled) bathroom is available for use within the hangout.
- The centre also has designated Male, Female, and accessible (disability) bathrooms.
- Designated baby change facilities are also available.



SEAFORD HANGOUT

48 RAILWAY PARADE, SEAFORD, 3198



CONTACT DETAILS

Kellie: 0488 591 421

Email: kellie.powell@frankston.vic.gov.au

SEAFORD HANGOUT OPENING HOURS:

Tuesday 3pm - 5pm



**SCAN
ME** 

TO SEE OUR SOCIAL STORY

GETTING HERE



PARKING

Free Street parking is available. There is a 15-minute limit between 9 am-10 am and 3 pm-4 pm (availability varies between 2 pm and 4 pm due to Kindergarten and Primary School)
One accessible space is available in the Child and Maternal Health Centre car park



PUBLIC TRANSPORT

Train - Frankston Line train to Seaford station departing and arriving every 10 minutes
Disembark at Seaford train station and use the traffic lights to cross the road at Station Street/McKenzie Street, walk down the road to cross at McRae Street (160m walk, approx. 2 minutes)



Bus - These bus routes arrive at Seaford Station:

- Bus route 780 From Frankston train station to Carrum Station.
Disembark at Seaford train station and use the traffic lights to cross the road at Station Street/McKenzie Street, walk down the road to cross at McRae Street (160m walk, approx. 2 minutes)

When arriving from Carrum, cross the road to McRae Street.

- Bus route 760 from Cranbourne via Carrum Downs to Seaford
Disembark at Seaford train station and use the traffic lights to cross the road at Station Street/McKenzie Street, walk down the road to cross at McRae Street (160m walk, approx. 2 minutes)



Bike/Scooter - A fenced area is available to keep bikes and scooters while at the hangout.

SPACE ACCESSIBILITY

- Seaford Hangout has no steps or ramps.
- Doors to enter and in the building are push/pull doors.
- The space is not wheelchair accessible, with minimal room to move mobility aids.
- Registered service animals are welcome into the space.



SENSORY INFORMATION

- The space has white lighting with alternatives (natural light and LED colour lights)
- Young people may wear headphones, and move between the two rooms to seek a quieter space if needed.
- The space may be loud or quiet depending on how many people are in the space.
- The Seaford Hangout is only open on Tuesday between 3 pm and 5 pm during the school term.



BATHROOM ACCESSIBILITY

- A gender-neutral bathroom is available within the hangout. This is not wheelchair accessible.
- The closest accessible (disability) bathroom is available at Seaford Station



KARINGAL HANGOUT

**103 ASHLEIGH AVENUE
FRANKSTON, 3199**



CONTACT DETAILS

Jane: 0488 590 448

Email: jane.thomson@frankston.vic.gov.au

KARINGAL HANGOUT OPENING HOURS:

Wednesday 3:30pm - 5pm



**SCAN
ME** 

TO SEE OUR SOCIAL STORY

GETTING HERE



PARKING

The Karingal Place Community Centre has two car parks (entry via Ashleigh avenue) with 20+ car spaces and 2 designated accessible spaces in each car park. Parking is free and there are no time limits.



PUBLIC TRANSPORT

Bus - Bus route 770 runs from Frankston to Karingal via Ashleigh Avenue
Disembark at Cnr of Flam Street and Ashleigh Avenue outside of the centre. A bus stop is approx. 50m from the main entrance (approx. 1 min)



Bike/Scooter - Bike racks are available outside the Community Centre to securely lock up bikes and scooters

SPACE ACCESSIBILITY

- Karingal has both steps and a ramp to enter, and inside the building.
- Doors to enter are automatic sliding doors, and inside are push/pull doors.
- Tactile guiding is used to mark ramps, access points to disabled parking spaces, and bus stops.
- The space has plenty of room for mobility aids, such as wheelchairs, crutches, and canes, to be moved and turned around.
- Registered service animals are welcome into the space.



SENSORY INFORMATION

- Young people may wear headphones, or sometimes be able to sit in a quieter space in the centre if needed.
- The Karingal Hangout is only open on Wednesdays between 3 pm and 5 pm during the school term.



The Karingal Hangout is located in a large indoor sport hall and kitchen. The space may be loud and echoey.

BATHROOM ACCESSIBILITY

- The centre has designated Male, Female, and accessible (disability) bathrooms.
- Designated baby change facilities are also available.



CARRUM DOWNS HANGOUT

203 LYREBIRD DR CARRUM DOWNS, 3201



CONTACT DETAILS

Callan: 0488 599 249

Email: Callan.Rafferty-Brown@frankston.vic.gov.au

CARRUM DOWNS HANGOUT OPENING HOURS:

Thursday 3pm - 4:45pm



GETTING HERE



PARKING

The Lyrebird Community Centre has a designated car park with 50+ car spaces and 2 disability access spaces with a ramp. Parking is free with no time limits.



PUBLIC TRANSPORT

Bus – These buses arrive at surrounding bus stops:

- Bus route 833 from Frankston Station to Carrum Station via Carrum Downs
Disembark at Carrum Downs Regional SC and walk to the left of the centre for 450m to the Community Centre (5 min approx.)
- Bus route 760 from Cranbourne via Carrum Downs to Seaford
Disembark at Carrum Downs Regional SC/Lyrebird Drive and walk 80m to the Community Centre (1 min approx.)
- Bus route 832 from Frankston to Carrum Downs via Kannanook and McCormicks Road
Disembark at Carrum Downs Regional SC/Lyrebird Drive and walk 80m to the Community Centre (1 min approx.)



Bike/Scooter – Bike racks are available outside the Community Centre to securely lock up bikes and scooters

SPACE ACCESSIBILITY

- Carrum Downs has both steps and a ramp to enter.
- Doors to enter are automatic sliding doors, and inside are push/pull doors.
- Tactile guiding is used to mark ramps, access points to disabled parking spaces, and bus stops.
- The space has room for mobility aids, such as wheelchairs, crutches, and canes, to be moved and turned around.
- Registered service animals are welcome into the space.

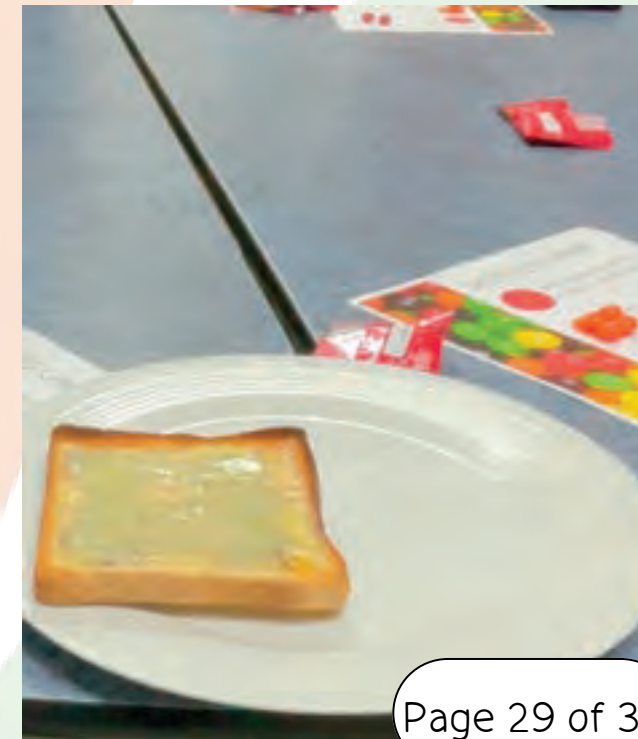


SENSORY INFORMATION

- Young people may wear headphones, or access different rooms to seek a quieter space if needed.
- The Carrum Downs Hangout is only open on Thursday between 3 pm and 5 pm during school term.
- The space may be loud or quiet depending on how many people are in the space.

BATHROOM ACCESSIBILITY

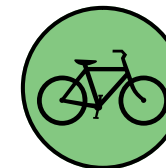
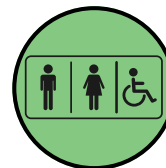
- The centre has designated Male, Female, and accessible (disability) bathrooms.
- Designated baby change facilities are also available.



LANGWARRIN HANGOUT



**2 LANG ROAD
LANGWARRIN, 3910**



CONTACT DETAILS

Scott: 0488 590 917

Email: scott.prior@frankston.vic.gov.au

LANGWARRIN HANGOUT OPENING HOURS:

Friday 3pm - 4:45pm



**SCAN
ME** 

TO SEE OUR SOCIAL STORY

GETTING HERE



PARKING

Langwarrin Community Centre has a carpark (entry via Lang Rd) with 47 car spaces available, and 1 designated accessible space with a ramp. Parking is free and there are no time limits.



PUBLIC TRANSPORT

Bus – Public Transport buses run along Cranbourne–Frankston road:

- Bus route 789 runs to and from Frankston Train Station.

Disembark at Cnr of Cranbourne Rd and Warrandyte/Cranbourne–Frankston Rd and walk up Warrandyte Rd for 500m (approx. 8 minutes). Alternatively, disembark at Elisabeth Murdoch College/Warrandyte Rd and walk towards Cranbourne Frankston Rd until the roundabout at Warrandyte Rd and Lang Rd (approx. 3 minutes)

- Bus route 791 runs from Frankston Station to Cranbourne station. Disembark at Cnr of Cranbourne Rd and Warrandyte Rd and walk up Warrandyte Rd for 500m until the roundabout at Warrandyte Rd and Lang Rd (approx. 8 minutes).
- Bus route 771 runs to and from Frankston Train Station. Disembark at Athol Court stop and walk down Warrandyte Rd towards Cranbourne for 100m until the roundabout at Warrandyte Rd and Lang Rd (approx. 1 minute).



Bike/Scooter – Bike racks are available outside the Community Centre to securely lock up bikes and scooters

SPACE ACCESSIBILITY

- Langwarrin has no steps or ramps.
- Doors to enter are automatic sliding doors, and inside are push/pull doors.
- Tactile guiding is used to mark access points to disabled parking spaces.
- The space has room for mobility aids, such as wheelchairs, crutches, and canes, to be moved and turned around.
- Registered service animals are welcome into the space.



SENSORY INFORMATION

- The Langwarrin Hangout may be busy, or it may be quiet.
- The space is a large room so it can echo.
- Young people may wear headphones, or access different rooms to seek a quieter space if needed.
- The Langwarrin Hangout is only open on Fridays between 3 pm and 4:45 pm during the school term.

BATHROOM ACCESSIBILITY

- The centre has designated Male, Female, and accessible (disability) bathrooms.
- Designated baby change facilities are also available.





don't forget to check out our socials @FrankstonYouthService



FYS rocks!

