

## Sort your load and save

Sorting and separating your load before you arrive makes it easy to identify what's recyclable, and will save you money at the gate.

## FRRRC is great value

FRRRC can accept some of the items not acceptable for hard waste collections such as tyres, paint and building materials.

Free items include **paint**, e-waste and scrap metal.

See the full list at [FRRRC.com.au](http://FRRRC.com.au)

Phone 1300 322 322

FRRRC is not a landfill site  
No household garbage



HARD WASTE



GREEN WASTE



RECYCLING

## Other recycling and disposal options

- **Asbestos or Hazardous Waste**  
[epa.vic.gov.au](http://epa.vic.gov.au) or 1300 372 842
- **Charity Donation**  
[opshop.org](http://opshop.org) or phone directory
- **Detox your Home**  
[sustainability.vic.gov.au/detoxyourhome](http://sustainability.vic.gov.au/detoxyourhome) or 1300 363 744
- **Recycling Directory**  
[frankston.vic.gov.au](http://frankston.vic.gov.au) (search 'recycling directory')

## Hard Waste Collection step-by-step guide

- ### 1 Correct material

  - Items with a tick are accepted
  - Items with a cross will not be collected
- ### 2 Right size

  - Max. 2 cubic metres (2m x 1m x 1m) of waste in total will be collected — more than this will be considered illegal dumping
- ### 3 Neat and tidy on the nature strip

  - Waste must be placed in **five** neat stacks
  - Stacks will be collected by different trucks, possibly on different days
  - **Allow clear access:** leave two metres between your hard waste and your garbage/recycling bins
- ### 4 On time

  - Place items out **no** earlier than the Saturday two days before your collection week and no later than **6am** on the Monday of your collection week
  - Any earlier and you risk being fined for illegal dumping
- ### 5 Scavenging

  - Unauthorised removal of hard waste from nature strips is **theft**. Please report scavengers, phone 1300 322 322
- ### 6 Your waste is your responsibility

  - Any excess waste or items not accepted will have to be removed by **you**
  - Any items left on the nature strip after the collection will be considered illegal dumping and you may be **fin**ed



**WM WASTE  
MANAGEMENT  
SERVICES PTY**

Phone 9721 1915

## Hard Waste Collection 2024



This collection is for  
Frankston City householders



### Council is strictly enforcing hard waste rules:

- Total material should not exceed two cubic metres
- Any excess waste or items not accepted will have to be removed by you
- Items placed out early or left on the nature strip after the collection will be considered illegal dumping and you may be fined
- Hefty penalties apply with fines starting at \$200

**All material** must be out on the nature strip for collection by **6am** on

### Monday

**Place items out on your nature strip no earlier than the Saturday two days before your collection week.**

If not out in time, a return visit will not be made.

Stacks will be collected by different trucks, possibly on different days during your collection week.



# YES These items are accepted

- No more than **two** cubic metres in total
- Neatly place your items in **five** separate stacks on the nature strip
- Present your hard waste correctly to allow goods to be recycled
- Five separate collection vehicles will visit your street



# NO These items will not be collected

Stack 1

## Hard waste

Hard waste ends up in landfill, so please recycle as much as you can before deciding to place it on the nature strip for collection.

- Household furniture, clothing, toys
- Carpet rolls up to 1.5 metres long
- Timber up to 1.5 metres long, 12 pieces maximum
- Mirrors up to 1.5 metres long, glass and crockery: securely wrapped and marked 'fragile'



Stack 2

## Scrap metal and whitegoods\*

- Scrap metal, corrugated iron, empty tins (remove lids)
- Whitegoods including washing machines and dryers
- Lawn mowers, tools, small car parts (no engine blocks)
- Hot water systems, baths
- DVD players, stereos, VCRs, games consoles
- Corded power tools



Stack 3

## E-waste and fridges\*

- TVs and computers
- Printers, keyboards, 'mice'
- Refrigerators and freezers (remove doors for safety)
- Small electrical items: kettles, hair dryer



Stack 4

## Green waste\*

- All green waste must be tied into bundles with string, **not** rope, wire or plastic
- Bundled branches up to 15cm in diameter, no tree stumps weighting more than 30kg
- Bundles should be no longer than 1.5 metres and one person must be able to lift to shoulder height



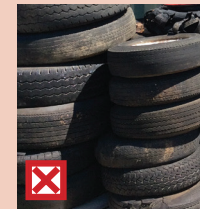
Stack 5

## Mattresses\*

- No more than **two** mattresses and/or bed bases



- **No** tyres, wheels or car batteries
- **No** renovation, cabinetry, building or demolition materials, fencing, rocks, rubble, soil, bricks or concrete
- **No** dangerous goods (e.g. paints, oils, poisons or pool chemicals)
- **No** bagged waste
- **No** hazardous waste or medical waste (e.g. asbestos, cement sheeting or sharps)
- **No** gas bottles, fuel tanks, water tanks or solar panels
- **No** unwrapped glass
- **No** household garbage or food waste
- **No** recyclables suitable for household recycling bins
- **No** untied green waste or green waste in plastic bags
- **No** waste from industrial and commercial premises and businesses operated from home
- **No** bean bags
- **No** items too heavy for 2 people to lift safely or more than 1.5 metres long



\* Items from stacks with a green asterisk will be recycled

Place items out **no earlier** than the Saturday two days before your collection week — any earlier and you risk being fined for illegal dumping